

# Arias Farm Bed & Breakfast

Rotorua Accommodation that's right near town, yet has lots of space and animals to play with! Our accommodation is situated on a cute 3 acre town farm right in the city suburbs of Rotorua.

Our lodge Bed & Breakfast has 3 separate rooms, suitable for singles, couples, or a small family looking for peace and quiet, and a breakfast laid out at your leisure. Baby cot and high chair is available.

Our stand-alone Tiny Home has two bedrooms sleeping up to 6 persons, full kitchen, bathroom, washing machine, Wifi, outside enclosed deck, shared spa, and complimentary continental breakfast stored in the fridge.

Peace and quiet close to Rotorua township  
No sulphur smell or traffic noise  
Animals to feed, learn about, & pet  
Child friendly with play areas & sandpit  
Lots of room for extra visitors and games  
Hot spa to relax in after a day sightseeing  
Free Internet access 24/7, TV in room  
Lots of safe, offstreet parking, well away from road

Enjoy the open space, clean air, birdsong, quiet bush surroundings and natural springs that are Aria's Farm. Be welcomed by your friendly and experienced Kiwi host family at the best of Rotorua's Accommodation, situated right within the town boundaries.

We also have larger self-contained units for bigger groups.

ASK ABOUT OUR GREAT MID-WINTER, MID-WEEK DISCOUNTS!

## Contact Information:

**Mobile:** 021753691

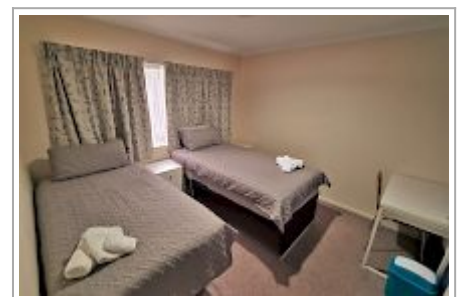
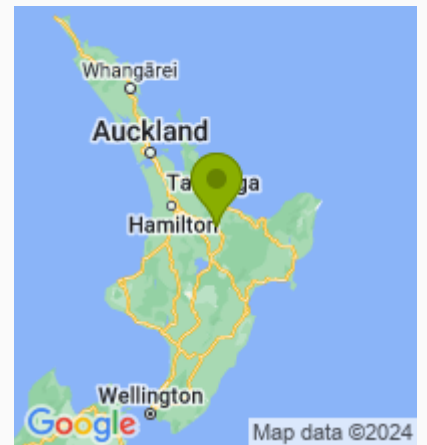
**Address:** 396 Clayton Rd,  
Pukehangi, Rotorua

**Contact:** Kerris Browne

**Location:** 8km from City Centre -  
396 Clayton Rd, Pukehangi,  
Rotorua 3015

**Directions:** We are located at the very top end of Clayton Rd, on the Northern side of town, between the Skyline gondolas and Paradise Valley lion park, at the base of Mt Ngongotaha, just 1km from the Speedway/Stock car track.

**GPS:** -38.133283, 176.1952732



# Arias Farm Bed & Breakfast Map

