

Penhaven Farm Stay

We designed our home over twentyfive years ago, creating a haven on the family farm. The home is a lovely spacious home with two lounges for you to enjoy the farm from. There are panoramic views of the hills from the house; every window has a lovely view whether it is farm, garden or hills. The two bedrooms are located down a private wing, it accommodates a maximum of three adults or two adults and two children. The rooms are privately positioned with separate bathroom, shower and toilet for your sole use. Toiletries are supplied and a hair dryer is available. Penhaven sits upon 20 acres where we have beef cattle. We also have free range hens and many pet animals that just enjoy life. (Including a pet deer!)

Take a leisurely farm tour and enjoy feeding the various friendly farm animals and learn about life on the farm. Our large vegetable garden produces a range of vegetables, and we have a selection of fruit trees providing seasonal fruits. We are nearly self sufficient with all the seasonal variety of produce. We have a true love for the land and our animals. We respect and care for our land, working with nature as naturally as possible.

We have extensive knowledge of the local area, including glow worms, nature walks and local swimming holes.

Contact Information:

Phone: 0277466771

Mobile: 0277466771

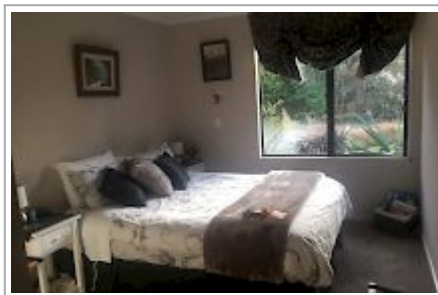
Address: 1371 Kairanga
Bunnythorpe Road, R D 5

Contact: Marie Palmer

Location: 9 km south west from
Palmerston North City (10 minutes)

Directions: A ten minute drive out of Palmerston North and under two hours north of Wellington. Located south of Kairanga School, on Kairanga Bunnythorpe Road. At the entrance a Blue Tractor Letter Box and an old plough with a wooden sign saying "Penhaven".

GPS: -40.36432130000001,
175.51133219999997



Penhaven Farm Stay Map

