

The Jolly Poacher Retreat

The Jolly Poacher Retreat is located in a quiet, rural setting along a one way street which is surrounded by Marlborough's world famous vineyards. This farming 5 Acre property was built in 1947.

We are both avid gardeners, using organic practices where possible, having changed this property immensely over the last few years, we will place the freshest of food on your plate from our garden, glasshouse and orchard, vegetables, walnuts, fruit, free range eggs, beef and lamb.

Our plan is to one day be able to host garden tours in our lovely setting.

During the summer months the private Salt Water swimming pool and loungers are available for your enjoyment anytime.

The fully covered Entertainment Area consists of BBQ, Pizza Oven, Teppanyaki Cooker, and Large Open Fire with comfortable seating. This joins onto the "Dave's Man Cave" with old style bar, pool table, dart board, 50" LCD TV, hunting & sporting memorabilia, Classic Car, a place to relax and embellish on old stories.

There are several park benches, hammocks, tables and chairs around the property where you can relax with music a drink or a book in your own space.

The car parking area is directly opposite your cottage in a very secure area. We can also accommodate trucks/boats/horse floats, in our lighted back car park. (We will be a security gated property in the near future).

Contact Information:

Phone: 035705948

Freephone: 021489168

Mobile: 0273903537

Address: 28 Bothams Bend Road, Spring Creek.

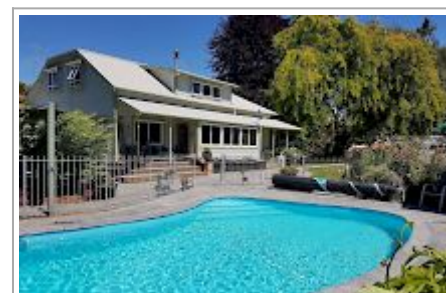
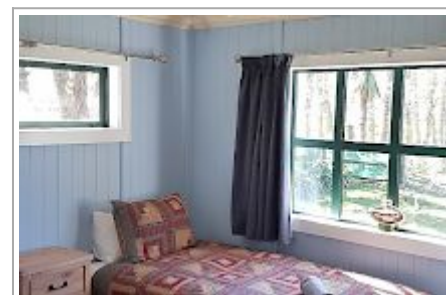
Contact: Dave Weir or Helen Patchett

Location:

Click <https://goo.gl/maps/inBKck> here to open the location in your Google Maps app.

Directions: The Jolly Poacher Retreat is located at 28 Bothams Bend Road, Spring Creek, just 24kms south of Picton. 15km from Blenheim Airport and only 5 mins/7km north of Blenheim.

GPS: -41.4487686,
173.97804010000004



The Jolly Poacher Retreat Map

