

Mangawhai Lodge - a room with a view

Set at the small beach town of Mangawhai Heads, 80 minutes drive north of Central Auckland on Northland's picture post card East Coast and mid way between Auckland Airport and the Bay of Islands, Mangawhai Lodge offers the perfect retreat for rest and relaxation.

We offer a choice of two quality B&B rooms opening to verandas and panoramic sea views with their own bathrooms and a full breakfast included. Or choose from our two well equipped modern apartments, (one disabled accessible) ideal for guest who prefer to self cater or for extended stays with breakfast available on request. Free WIFI & off street parking.

Perched on a hill opposite the golf course, Mangawhai Lodge offers spectacular views of the Upper Hauraki Gulf, Bream Bay and the white sandy beaches of Mangawhai. Walk to the shopping centre, cafes & restaurants and harbour beach.

Enjoy nearby beaches and walkways, bird life, fishing, surfing, kayaking or relax with a good book soaking up the ambiance. With weekend markets, artisan galleries and several quality eateries and vineyards nearby there is something for every taste and need.

There is a choice of day trips to enjoy the treasures of the north, be it history, beaches, scenery, vineyards, diving or horse riding.

Visit our website at www.seaviewlodge.co.nz for seasonal specials

Contact Information:

Phone: 09 431 5311

Mobile: 027 496 0029

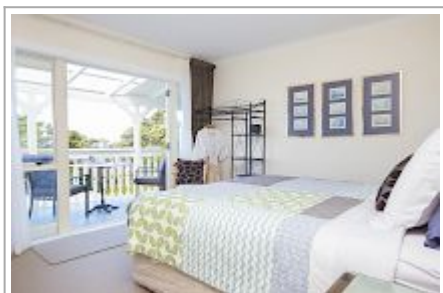
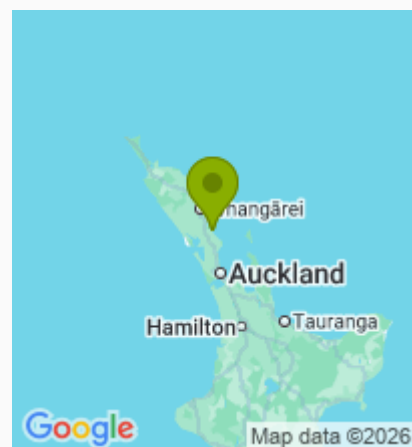
Address: 4 Heather Street,
Mangawhai Heads, Mangawhai

Contact: Jeannette Forde

Location: 80 minutes drive north of Auckland, 50 minutes south of Whangarei.

Directions: From Auckland turn R off SH1 at Wayby Valley Rd (15 min. north of Warkworth) follow sign to Mangawhai Heads. At Mangawhai Heads turn R off Molesworth Drive after Blue Harvest Cafe, Mangawhai Lodge is in front, up a drive with parking at the back

GPS: -36.1004276, 174.5888003



Mangawhai Lodge - a room with a view Map

