

Angie's Rural Retreat

Angie's Rural Retreat is a lovely 2-bedroom cottage on a 10acre lifestyle block (hobby farm)

Nestled in a quiet valley with a creek dividing the paddocks, you can hear the sound of birds and spot the odd eel. We keep a dog, chickens, and sheep. No cows. However, if you go for a walk up the valley, you will see horses, goats and yes cows at times ;-)
The cottage has been renovated recently and looks tidy. It is fully set up with your own bathroom, kitchen, open lounge and covered patio area and 2 bedrooms.
TV with Freeview and DVD, WIFI, washing machine, dryer, iron and ironing board and a dishwasher, plenty of parking available. You can bring the trailer too.

We welcome travellers from all around the world including well behaved children. However, kids under 14 need to be supervised at all times. We have electric fences around the paddocks. Please check with us first before you enter any area with animals, touch or feed them, to ensure the safety of everyone including the animals.

We love our spot. It's close enough to explore the coolest capital.
And a bit closer to home we have many amazing tracks to walk or bike ride on for all fitness level.

The Brookfield Scout camp is just up the road. The Rimutaka Forest Park with the wild kiwis is worth a visit as well as the rugged coast to name just a few. We have plenty of brochures and information in the cottage to tell you more.

Contact Information:

Mobile: 0210576782

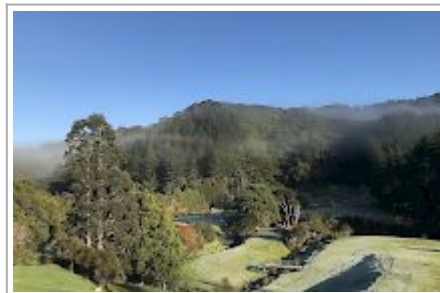
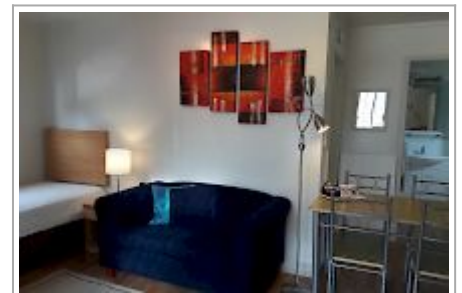
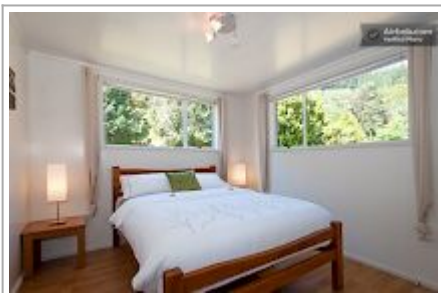
Address: 317 Moores Valley Road,
Wainuiomata

Contact: Angie Lorenz

Location: Rural Wainuiomata,
Lower Hutt, -25km from Wellington
CBD

Directions: 3.17km from where the road starts at the roundabout in Wainuiomata homedale village area. Our property is on the left side of the road.

GPS: -41.2601124, 174.9827555



Angie's Rural Retreat Map

